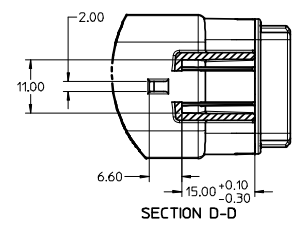
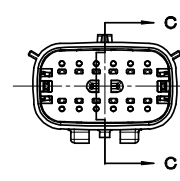
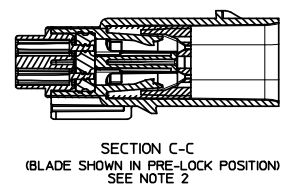
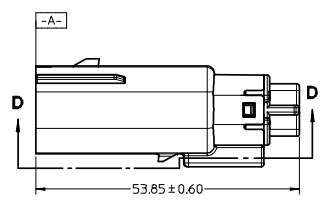
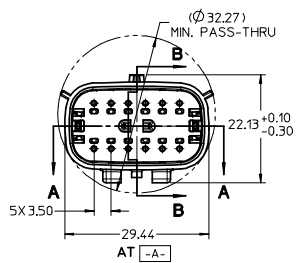
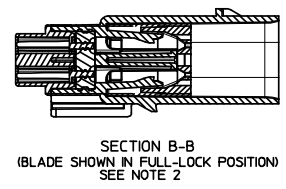
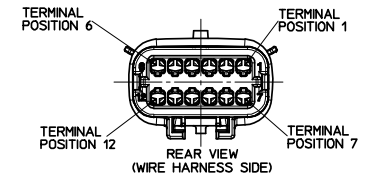
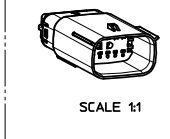
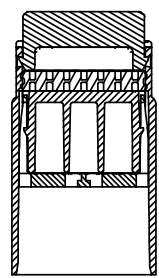
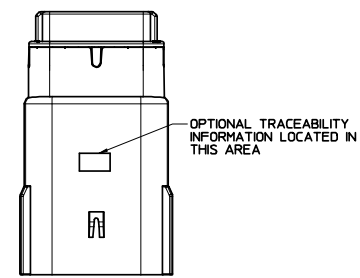
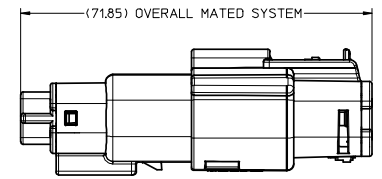
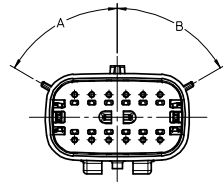
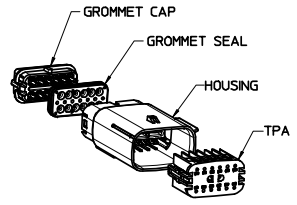


ASSEMBLY PART NUMBER	COLOR	KEYING OPTION	DIMENSIONS		CAVITY TYPE & STATUS (X = PLUGGED)																		
			A	B	1	2	3	4	5	6	7	8	9	10	11	12							
33482-1201	BLACK	A	60	60																			
33482-1202	LT.GRAY	B	25	60																			
33482-1203	BROWN	C	60	25																			
33482-1204	GREEN	D	25	25																			
33482-1205	CUSTOM	TBD																					
33482-1206	BLACK	A	60	60											X								
33482-1207	LT.GRAY	B	25	60											X								
33482-1208	BROWN	C	60	25											X								
33482-1209	GREEN	D	25	25											X								
33482-1210	CUSTOM	TBD													X								
33482-1211	BLACK	A	60	60											X	X							
33482-1212	LT.GRAY	B	25	60											X	X							
33482-1213	BROWN	C	60	25											X	X							
33482-1214	GREEN	D	25	25											X	X							
33482-1215	CUSTOM	TBD													X	X							
33482-1216	BLACK	A	60	60	X										X	X							
33482-1217	LT.GRAY	B	25	60	X										X	X							
33482-1218	BROWN	C	60	25	X										X	X							
33482-1219	GREEN	D	25	25	X										X	X							
33482-1220	CUSTOM	TBD			X										X	X							
33482-1221	BLACK	A	60	60	X										X	X							X
33482-1222	LT.GRAY	B	25	60	X										X	X							X
33482-1223	BROWN	C	60	25	X										X	X							X
33482-1224	GREEN	D	25	25	X										X	X							X
33482-1225	CUSTOM	TBD			X										X	X							X
33482-1226	BLACK	A	60	60											X								X
33482-1227	BLACK	A	60	60	X	X	X	X	X	X	X	X	X	X	X	X	X	X	X	X	X	X	X
33482-1228	LT.GRAY	B	25	60	X	X	X	X	X	X	X	X	X	X	X	X	X	X	X	X	X	X	X
33482-1229	BROWN	C	60	25	X	X	X	X	X	X	X	X	X	X	X	X	X	X	X	X	X	X	X
33482-1230	GREEN	D	25	25	X	X	X	X	X	X	X	X	X	X	X	X	X	X	X	X	X	X	X
33482-1231	CUSTOM	TBD			X	X	X	X	X	X	X	X	X	X	X	X	X	X	X	X	X	X	X
33482-1232	BLACK	A	60	60		X	X								X								X
33482-1233	BLACK	A	60	60		X	X								X								X
33482-1234	BLACK	A	60	60											X	X							X
33482-1235	BLACK	A	60	60		X	X								X	X	X	X	X	X	X	X	X
33482-1236	LT.GRAY	B	25	60	X										X	X	X	X	X	X	X	X	X
33482-1237	BLACK	A	60	60		X									X								X
33482-1238	LT.GRAY	B	25	60	X										X								X
33482-1239	BLACK	A	60	60	X										X	X	X	X					X
33482-1240	BLACK	A	60	60		X	X								X	X	X	X					X
33482-1241	BLACK	A	60	60											X	X	X	X					X
33482-1242	BLACK	A	60	60											X	X							X
33482-1243	BLACK	A	60	60		X									X								X
33482-1244	BLACK	A	60	60		X		X							X								X
33482-1245	BLACK	A	60	60											X	X	X	X					X
33482-1246	BLACK	A	60	60											X								X
33482-1247	BLACK	A	60	60		X	X	X							X	X							X
33482-1248	BLACK	A	60	60	X		X	X	X	X	X	X	X		X								X
33482-1249	BLACK	A	60	60											X	X	X						X
33482-1250	BLACK	A	60	60											X	X	X	X	X	X	X	X	X
33482-1251	BLACK	A	60	60		X		X	X						X	X							X



- NOTES: UNLESS OTHERWISE SPECIFIED
- DESIGNED TO MATE WITH RECEPTACLE HOUSING ASSEMBLY SPECIFIED IN MOLEX CHARTED DRAWING SD-33472-121.
 - ASSEMBLY SHIPPED WITH BLADE INSERT IN PRE-LOCK POSITION (SEE SECTION C-C PRE-LOCK). UPON FULL TERMINAL ASSEMBLY, EACH BLADE INSERT MUST BE SNAPPED INTO ITS FINAL-LOCK POSITION.
 - FOR BLADE TERMINALS TO BE USED WITH THIS ASSEMBLY, SEE DRAWING SD-33000-001.
 - SYSTEM TO BE USED WITH WIRE WITH DIAMETER RANGE OF 1.5mm TO 2.5mm.
 - MATERIAL: SPS/NYLON BLEND, 20% GLASS FILLED.
 - SHALL CONFORM TO PACKAGING SPECIFICATION PK-30907-811.
 - SHALL CONFORM TO PRODUCT SPECIFICATION PS-33472-000.



REDRAWN EC NO: UAU2008-0599 DRAWN/LOCK: 2008/03/24 CHKD/SVER/TL: 2008/03/24 APPR/SAR/EAU: 2008/03/24 REV: DESCRIPTION	QUALITY SYMBOLS	GENERAL TOLERANCES (UNLESS SPECIFIED)	DIMENSION STYLE	SCALE	DESIGN UNITS	THIRD ANGLE PROJECTION
	▽=0 ▽=0	mm INCH 4 PLACES ± --- ± --- 3 PLACES ± --- ± --- 2 PLACES ± 0.10 ± --- 1 PLACE ± 0.3 ± --- ANGULAR ± 3 °	MM ONLY DRAWN BY DATE DGR/IFF/THS 05-16-03 CHECKED BY DATE DGR/IFF/THS 05-16-03 APPROVED BY DATE DGR/IFF/THS 05-16-03	2:1	METRIC	
	DRAFT WHERE APPLICABLE MUST REMAIN WITHIN DIMENSIONS	MATERIAL NO: SEE TABLE	DOCUMENT NO: SD-33482-121	TITLE: MX150 BLADE CONNECTOR ASSEMBLY 2 ROW SEALED 12 WAY		
		SIZE: D	MOLEX INCORPORATED			SHEET NO: 1 OF 1